

azbil

Group Profile

azbil

Yamatake Corporation
Tokyo Bldg., 2-7-3 Marunouchi,
Chiyoda-ku, Tokyo 100-6419 Japan
<http://www.azbil.com/>




PR-1005E (1004-5K-TOP Rev.3)
All rights reserved. Unauthorized
reprint or reproduction of materials
in this brochure is prohibited.

Printed in Japan

azbil

Group

Leaping Ahead from Yamatake's 100 Years
Human-centered Automation

We support

users,
managers,
owners,
 and many others besides.



Make further energy savings



Rethink our company's eco-practices

Total energy management, Energy conservation proposals, ESCO



Work efficiently in a comfortable office



Manage our building with confidence



Enjoy shopping

Total building management, Building automation



Supply safe food



Know the food we eat is safe

Food production management, Logistics management



Provide a comfortable living environment



Make our life more comfortable

City gas, LP gas and water supply-related equipment



Work in comfort and safety



Run our plant efficiently

Production management, Factory automation, Plant automation, Safety management, Asset management

Group Philosophy

To realize safety, comfort and fulfillment in people's lives, and contribute to the global environment through "human-centered automation."

To realize this, We create value together with customers at their site.

We pursue our unique value based on the idea of "human-centered."

We think toward the future and act progressively.

azbil

[ázbil]

azbil (Automation · Zone · Builder) reflects our Group philosophy of "realizing safety, comfort and fulfillment in people's lives and contributing to the global environment through 'human-centered automation.'"



Support a comfortable life



Live with peace of mind

Care-related service, Nursing care



azbil

azbil's "human-centered automation" plays a central role in many environments, from plants and factories to work and home environments. For example...

We increase comfort and profitability in buildings, production plants and living environments while reducing energy consumption. We are also helping to enhance "safety, comfort and fulfillment" in society by creating safer and more reassuring living environments for an aging society and enhancing lifestyles in other ways.

Petroleum Refineries

Petroleum refineries break down crude oil into gasoline and kerosene. Precise temperature controls enable the creation of high-quality gasoline while minimizing the use of energy in production. azbil systems are instrumental for maintaining controls and managing production.

Tankers and Carriers

On tankers and carriers transporting valuable energy resources such as LNG and crude oil, azbil systems onboard monitor and control the temperature and pressure in storage tanks, as well as manage the operation of engine room machinery.

Hotels

Our priority is maintaining comfortable air-conditioned climates so guests continue to return to the hotels, and also reducing environmental impact through varying energy use by taking into account differences in energy consumption when rooms are unoccupied or at night, etc.

Iron Foundries

At foundries – where iron ore is melted, rolled, and eventually processed into plate and pipe – azbil's advanced control technologies are playing a key role.

Automobile Assembly Plants

Plants consume huge volumes of energy, and we work diligently to make electricity use more efficient, enhance the effectiveness of production methods and reduce environmental impact. Production plants depend on many switches and controllers for assembly. azbil production controls and air-conditioning technologies are major contributors to enhancing efficiencies in auto plant operations.

Paper Mills

Environment-friendly technologies are being developed to make paper from a variety of raw materials. Here too azbil's measurement & control technologies are contributing to the conservation of resources.

Homes and Lifelines

City gas and LP gas are transported from regional gas governor stations. azbil supplies gas governor stations with superior safety features, including highly reliable mechanisms that constantly check for abnormalities and other features, and home gas meters. We provide residential central air-conditioning systems equipped with a house dust filtration function to create comfortable and healthful living environments.

Chemical Plants

Plastic products and chemical fibers and textiles are assembled and produced using chemical processes. azbil systems preserve the quality of materials during chemical reactions and oversee the blending of materials and other operations.

Semiconductor and Electric Equipment Plants

Integrated circuits (ICs), liquid crystal displays (LCDs) and other components for mobile phones and personal computers are manufactured with azbil sensors and switches in their inner workings. In addition, azbil systems are instrumental for maintaining consistent temperatures and humidity and for defect analysis at plants in order to reduce defective parts produced.

Office Buildings

We prepare safe and comfortable working environments in buildings used by a broad array of workers and residents. Our building systems have comprehensive controls over living conditions and security on each floor and minimize energy costs in the most effective way.

Lifestyles

We offer a personal emergency response service for elderly persons living alone, as well as health consulting services including daily health management. Other services are nursing care, case management, sales and rental of nursing-care equipment, and a group home for the elderly.

Research Centers

We help to maintain special room conditions necessary for testing and other purposes while using energy and managing record-keeping in the most efficient way possible. Security of important materials and research units are maintained with strict precision.

Waste Treatment Plants and Public Facilities

azbil systems, which include bacteria temperature controls at sewage treatment plants, incineration temperature controls at waste treatment plants, utility controls at power stations, emergency response during abnormal operation and other activities, play important roles for ensuring environmental preservation and safety at plants in the communities we operate in.

Food Processing Plants and Pharmaceutical Plants

At food processing plants, azbil sensors and systems are crucial for mixing ingredients for flavoring, controlling temperature, avoiding the use of impurities in production processes, providing cleansers for sanitizing trays and containers and for the final shipment of products. It is, at pharmaceutical plants and hospitals, extremely important for many kinds of medicines to be rightly compounded with thorough and strict quality control. The precision equipment and production management systems of azbil enhance the safety and high quality of pharmaceutical products.

Department Stores and Shopping Centers

We ensure that the shopping space is comfortable while keeping energy use at minimally suitable levels by tailoring operations to match floor and tenant needs for temperature controls during peak hours and for cooler atmosphere in warm weather.

Hospitals

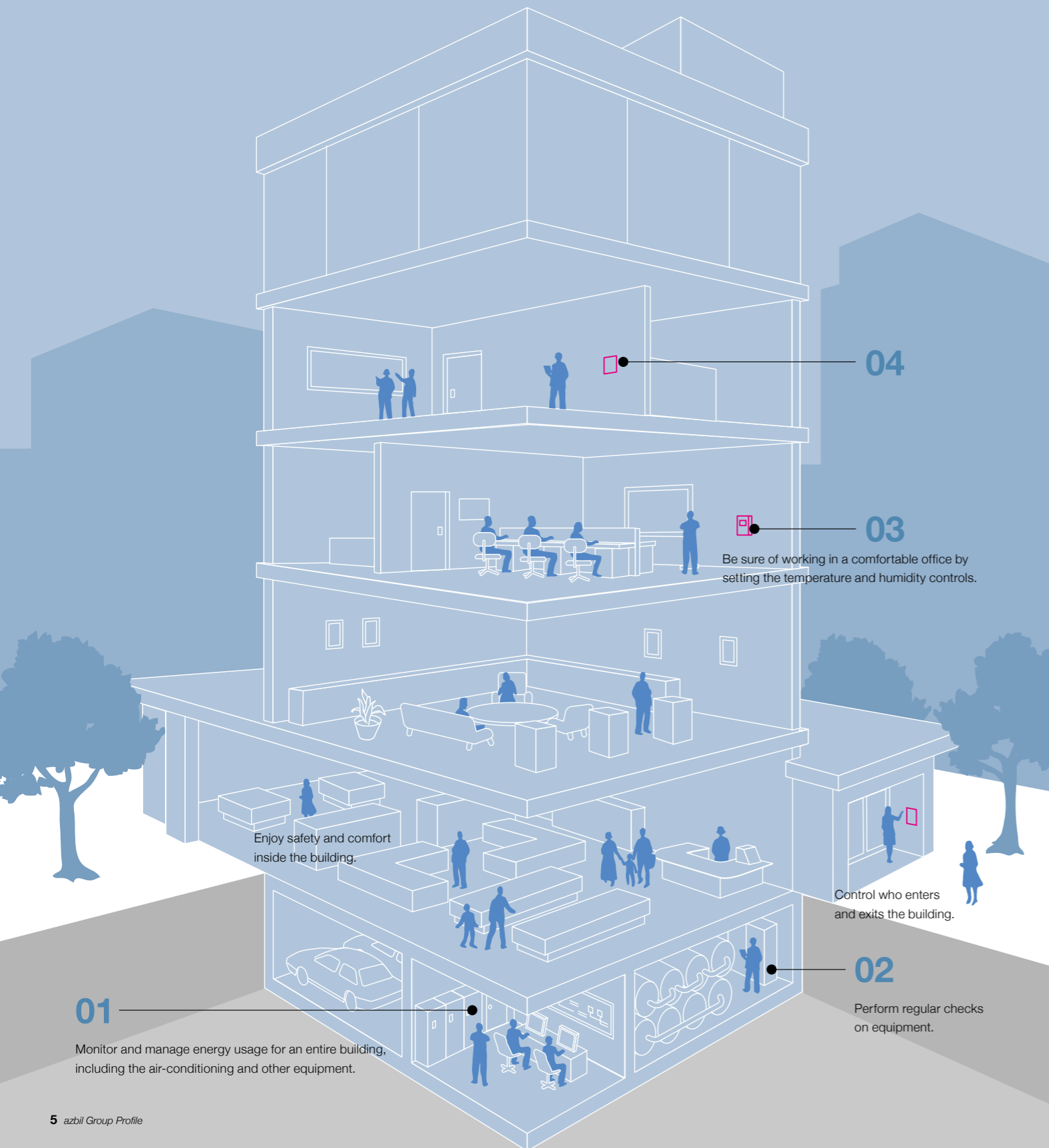
For round-the-clock safe environments at hospitals that are vital for maintaining human life, we provide special air-conditioning systems that prevent in-hospital infections and also install security systems. We analyze energy use and propose ways to curtail energy consumption, thereby helping to support hospital management.

Schools

We provide integrated control systems for the buildings and facilities serving many different purposes on school grounds. We also offer security for the school's main reference rooms and research facilities.

Buildings that offer high levels of safety and comfort and which are also highly functional and environment-friendly. We help to create such buildings by determining the "optimum environment" for users, managers and owners.

We develop and manufacture an extensive range of building automation products, from building automation systems and security systems to application software, controllers, valves and sensors, thus realizing high functionality and quality. These products and services are provided through an integrated framework, ranging from instrumentation design to sales, engineering, maintenance, energy-saving solutions and facility operation and management. We also apply original environmental technologies to create business and production spaces where people can work efficiently and in comfort, while contributing to reducing the environmental impact.



01 Monitor and manage energy usage for an entire building, including the air-conditioning and other equipment.

02 Perform regular checks on equipment.

03 Be sure of working in a comfortable office by setting the temperature and humidity controls.

04

01 Building Management Systems

Custom-built systems for total building management

These systems create an optimum environment for those inside while keeping down costs. They can be custom-built for equipment operation and energy/environmental management to suit diverse buildings and applications. IT integration with Internet and cellphone links is also possible.



SmartScreen™ Compact management panel



02 Controllers and Valves

Controlling water, air and energy within a building

These controllers are installed in building equipment. Using the data supplied by sensors and detectors, they are able to precisely control the air and water in a building.



Inflex™ AC



ACTIVAL™ PLUS Intelligent Component Motorized control valve with flow measurement and control functions

03 User-operated Devices

Optimizing management and reducing energy consumption

These devices allow the user to set levels for temperature, humidity and other variables. They offer excellent visibility and operability, and are linked to the central monitoring and control system to enhance management efficiency and contribute to energy savings.



Neopanel™

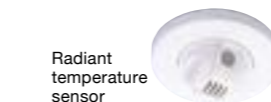
04 Measurement Devices

Advanced sensors for temperature and humidity

These sensors and detectors are designed for accurately gauging temperature and humidity. In addition to providing a clear picture of the environment inside a building, they can instantly transmit that information to a building management system.



Neosensor™



Radiant temperature sensor

Solution Menu

tems: Total Energy Management Service

Full-fledged ESCO

Yamatake's tems is a service that takes care of energy management, an important issue for customers. Everything is covered, from IT-based facility management to energy-saving control and diagnostics, financing, and guaranteed reductions in energy usage, thus helping to reduce energy consumption.

Building Renewal

Reducing lifecycle costs and improving asset value

We renew and repair the equipment necessary for a building to function properly or to provide new services. In this way, we are able to reduce lifecycle costs and improve asset value. We offer efficient renewal programs suited to different types of buildings, including short-term intensive work that does not interrupt the day-to-day functioning of the building.

Service Menu

Comprehensive Building Management Service*

Offering 24/7 remote monitoring and control

Using advanced technologies and expertise, Yamatake will undertake comprehensive management and maintenance on behalf of a building owner. Establishing communications links between the property and our operation center, we can perform remote management around the clock. Engineers with expert knowledge of building equipment are on duty at regional depot centers to perform routine checks and respond rapidly in emergencies.

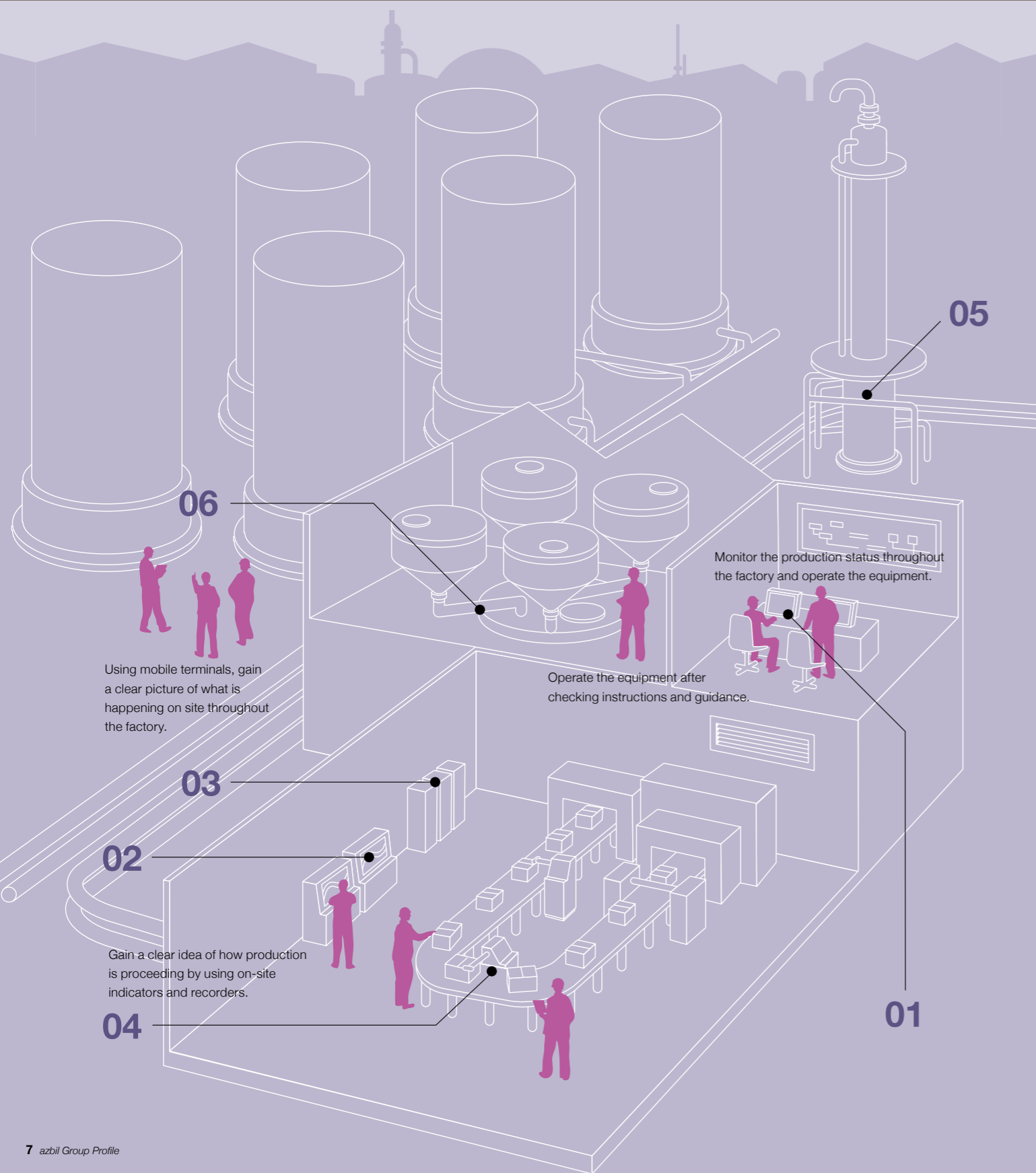
Building Automation



Some of these products and services are available only in Japan.

Factories that offer a high level of safety and which can be operated efficiently and optimally. We help to create such factories by determining the ideal relation between man and production.

We solve issues in a wide array of industries, from oil refining, chemical, iron and steel, pulp and paper to automobiles, electrical/electronic, semiconductor, and foods and beverages, through the provision of products, solutions, instrumentation, engineering and maintenance service to support optimal operation of the customers' facilities throughout their lifecycle. Collaborating with people involved in production, we develop advanced measurement and control technologies, and strive to realize a production site where workers can develop their own skills in safety, thus creating new value for our customers.



Using mobile terminals, gain a clear picture of what is happening on site throughout the factory.

03

Gain a clear idea of how production is proceeding by using on-site indicators and recorders.

04

Monitor the production status throughout the factory and operate the equipment.

Operate the equipment after checking instructions and guidance.

01

01 Monitoring & Control Systems

Combining advanced control technologies with the latest computer technologies

From large-scale plant automation systems that feature high-level integration of control technologies and IT, to on-site operation monitoring systems, Yamatake can deliver highly reliable, customized open systems. These include high-performance controllers and human-machine interfaces that employ the latest technologies.



02 Indicators and Recorders

Timely display and reliable recording of information

Facilitating quality management and process management of equipment and facilities, Yamatake supplies highly reliable digital recorders and programmable indicators that display data in real time.



Digital recorder



Programmable touch screen

03 Controllers

Devices that offer intelligent control

These products ensure optimum control of production equipment around the clock. We offer a wide product lineup, designed for a diverse range of applications and featuring the latest in control logic and tuning technologies.



Digital indicating controller

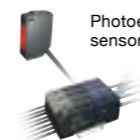


Dynamic self-checking burner controller and Advanced UV sensor

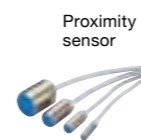
04 Sensors and Switches

A wide selection for on-site needs

Our sensors and switches ensure consistent and accurate detection. We offer a wide selection of models with high resistance to temperature and humidity, capable of satisfying the most demanding on-site requirements.



Photoelectric sensor



Proximity sensor



Limit switch

05 Process Sensors

Enabling high-precision measurement using advanced technologies

Our lineup of process sensors employs advanced technologies to respond to a wide range of sensing requirements. To further enhance measurement accuracy for the diversifying industrial market, we are continuously investing in the development of new sensor technologies.



Smart electromagnetic flowmeter



AT9000 Advanced Transmitter



Mass flow controller

06 Valves and Motors

Reliable technology backed by experience and achievement

Our valves and motors set the standard for control of gases and liquids. Excelling in control performance, as reflected by Yamatake's long track record, these products meet the needs of the increasingly diversified industrial market.



Control motor



Control valve

Solution Menu

MainSTEP

Yamatake, with core specialties in measurement and process control, has consistently been a leader in the use of new technology to provide a competitive edge in the manufacturing business and on the factory floor.

From consulting, design, and engineering to maintenance and repair, Yamatake is able to draw upon its many strengths to provide integrated life-cycle services. With an eye always on the future, Yamatake stands ready to assist consistent evolution of production facility improvement.

MainSTEP solutions

- Energy Management
- Plant Information Management System
- Advanced Operator Support System
- Advanced Process Control System
- Planning Optimization System
- Plant Performance Analysis System

The Right Answers for Your Industry

We resolve customer issues with individualized solutions that make sense for your industry.

Service Menu

Industrial Services Operation Program (ISOP)

This program implements on behalf of customers a variety of maintenance services of all the equipment that make up an instrumentation system. We offer a range of services, including emergency services, preventative maintenance and calibration services.

Condition Monitoring of Facilities

We provide tools and systems for early diagnosis of equipment abnormalities based on sound and vibration. We also provide tools, patrol service, etc. for detection of air leakage from pipes. More broadly, we offer a wide range of practical solutions for predictive maintenance and energy conservation for your automation assets.

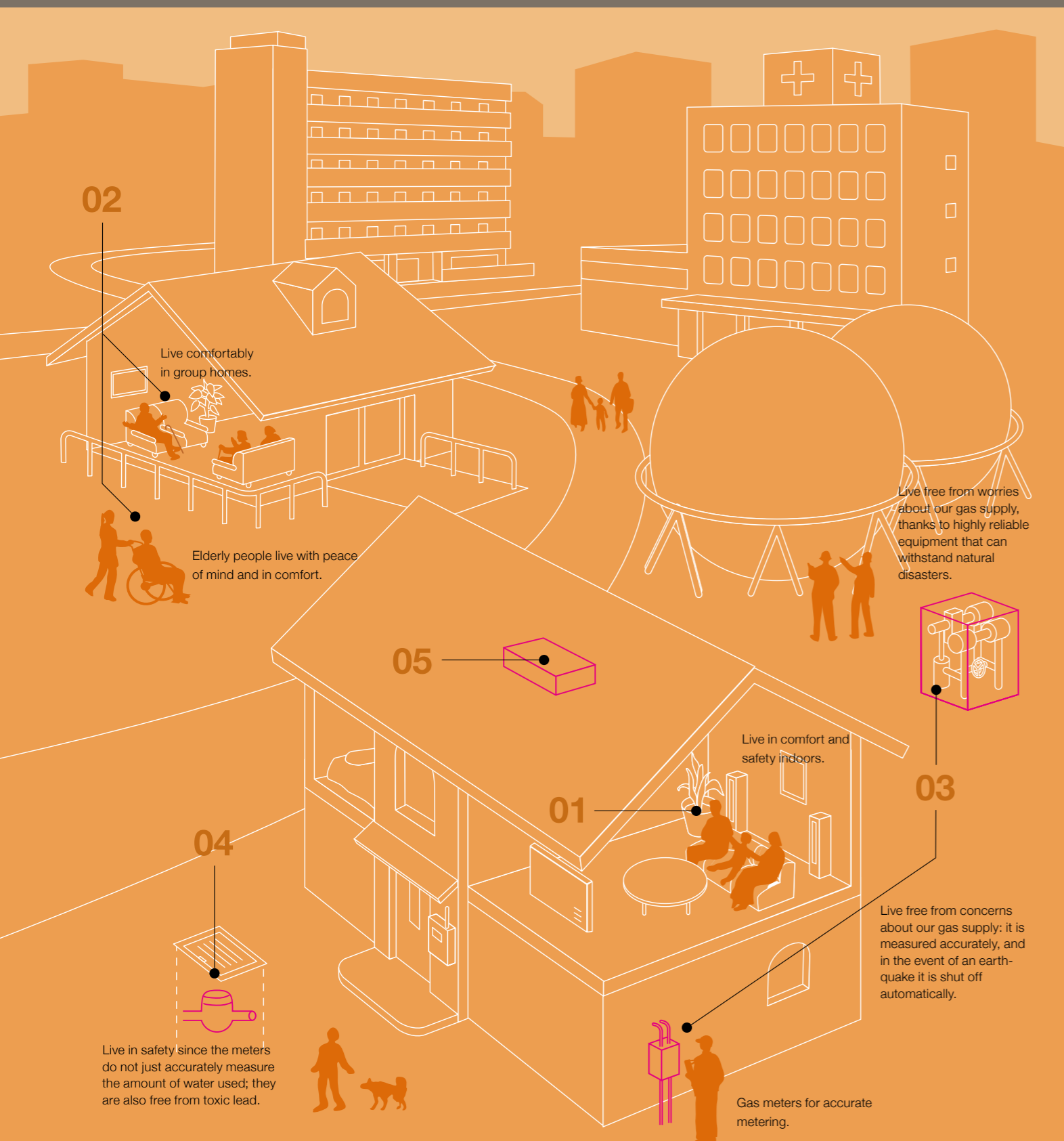
Some of these products and services are available only in Japan.



Finding ways to enhance safety and comfort, and also to make energy savings by introducing “human-centered automation” into the immediate living environment.

In response to the emergence of new needs of society – such as concerns about safety and security, the aging population, and environmental problems – we utilize automation technologies to deliver real solutions. This covers a range of fields, from upgrading the urban infrastructure that supports modern life to improving living environments. Through these services*, we are helping society and the individual, offering greater comfort and peace of mind, while also contributing to energy conservation.

*Available only in Japan



01 Telecare/Telehealth

Contributing to society as a pioneer of personal emergency response services

We offer various care-related services, including a personal emergency response service for elderly persons living on their own, health consultations, and mental health care. In collaboration with medical institutions, nursing-care service centers, and other care agencies, we provide various services to individuals depending on their needs. *This business is provided by Safety Service Center Co., Ltd.



02 Nursing Care

Providing quality nursing-care service with expert skills

We offer a high-quality nursing-care service and case management employing certificated care providers, registered care managers, and nurses. We are also engaged in the sale/leasing of various welfare equipments. *This business is provided by Yamatake Care-Net Co., Ltd.



03 City Gas & LP Gas Businesses

Ensuring stable, safe delivery of gas as a pioneer in the meter industry

We provide gas meters, which function as instruments for metering, ensuring safety and monitoring energy, and also safety devices like gas leak alarms, automatic shut-off valves, and pressure governors, which are necessary for pipelines to deliver gas safely and stably. These products have earned a strong reputation for their stable performance and durability in the gas supply field. *This business is provided by Kimmon Manufacturing Co., Ltd.



04 Water Meter Business

Realizing precise water metering with long-standing expertise

With a view to making safe, environment-conscious products that measure water accurately, we worked to rapidly develop a lead-free copper-alloy water meter, which we started selling in 1992. Beating our competitors, we were the first company in the industry to sell a water meter certified by the Japan Water Works Association (JWWA). *This business is provided by Kimmon Manufacturing Co., Ltd.

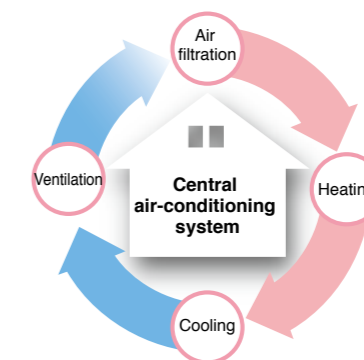


05 Residential Air-conditioning

Residential central air-conditioning system Kikubari

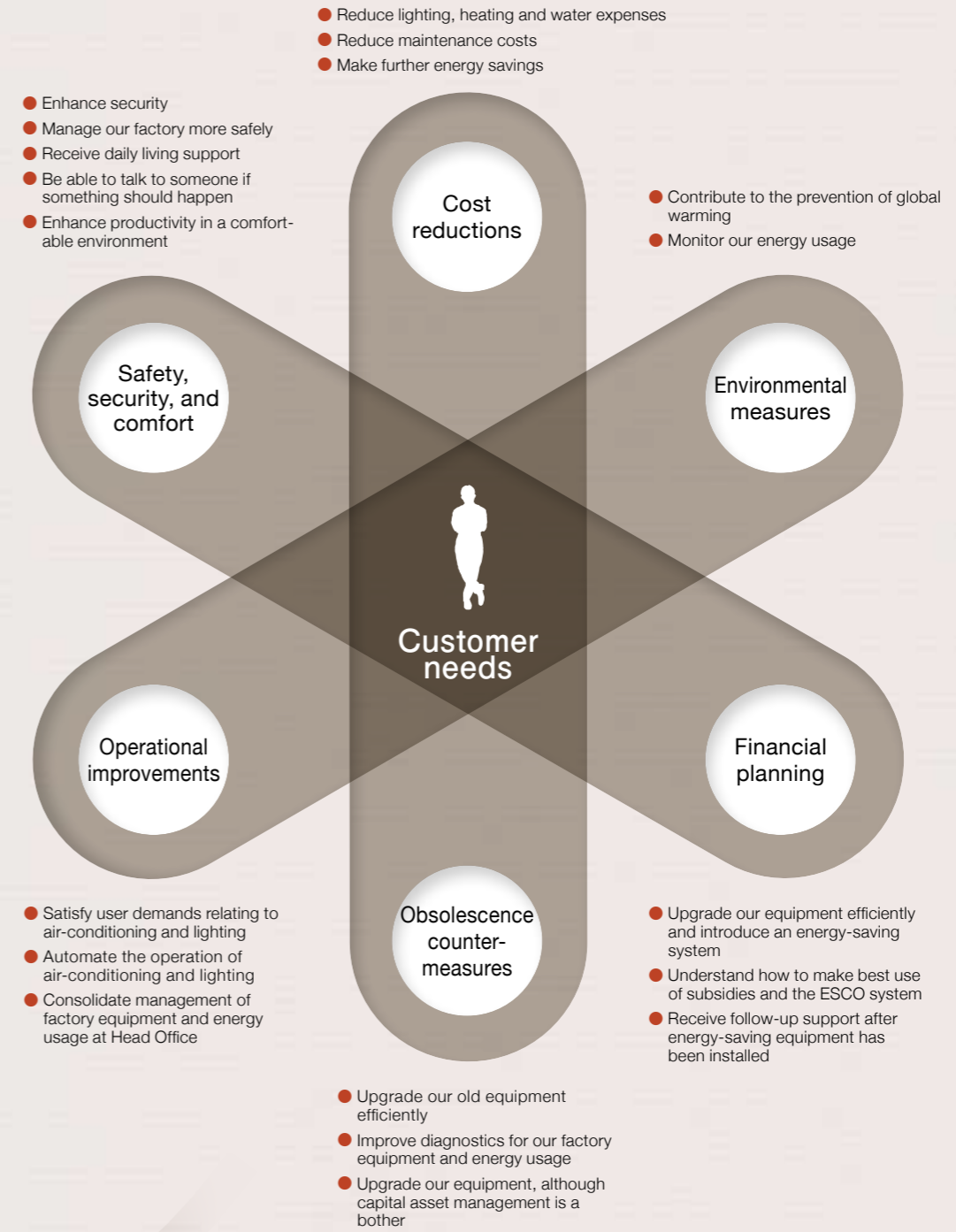
Ensuring a comfortable indoor temperature year round

This central air-conditioning system maintains a comfortable temperature throughout the house, while contributing to significant energy savings. It is also equipped with an electronic air cleaner for removing pollen and house dust.



From planning and development to maintenance service, the azbil Group offers an integrated approach to solving customers' problems.

At azbil, we adopt an integrated approach to our business – from planning and development to sales and maintenance – so as to provide swift solutions to our customers' needs. Responding with speed and precision to market demand and feedback, and applying our advanced technologies, we can enhance on-site engineering and service capabilities, and also reduce costs through improved efficiency. As a true solution partner, delivering optimum comfort, safety, and energy savings, we continually strive to develop compelling products and improved services that reflect market needs.



Harnessing the azbil Group's total manufacturing capabilities, we support our customers' solution-finding activities.

To respond to a broad range of customer needs, the azbil Group develops a wide variety of high-quality products, from hardware to software, employing its core automation technologies, particularly those related to measurement & control. In the production phase, based on a century of tradition and achievement, and drawing on the Group's total manufacturing capabilities, we are always striving to enrich our line of products manufactured in-house, enhance product quality, and offer a timely supply system.

Measurement Technologies That Support Quality

We can offer high-quality, high-precision products through superior measurement technologies approved by the Japan Calibration Service System (JCSS) for temperature, pressure, humidity, flow rate and electricity (direct current & low frequency).



The azbil Group possesses superior measurement technologies and, in accordance with Japan's Measurement Law, it has been certified as a calibration service provider by the JCSS. Exploiting these measurement technologies, we perform rapid, continuous calibration of measuring equipment, ensuring the absolute reliability and high performance required for plants and factories. In a variety of environments – high temperature, low temperature and clean rooms – we perform rigorous tests, and thus contribute to maintaining product quality.

Production Technologies That Support Quality

By continuously strengthening our "monozukuri" technologies, we develop our own production technologies, production processes, and products.



We are contributing to faster product development and adoption and also improvements in quality through the development of material application technologies, processing/construction technologies, machine tool/die technologies, and automated equipment/system technologies.

Material Technologies That Support Quality

By performing thorough analysis of materials, we maintain the quality of our products and also find solutions for our customers.

Building on our materials, R&D and accumulating expertise, we are able to select the optimum materials for achieving specific product characteristics. We also supply information on materials.



Full lineup of products manufactured in-house

From electronic parts, mechanical products and die-cast products to computer systems



Printed circuit boards



Mechanical switches



Control valves



Control systems



Sensors and transmitters



Control instruments



Meters

Production Facilities

Ensuring timely, stable supply of products from domestic and overseas production sites.

- | | |
|-------------------------------|--|
| Isehara Factory *1 | Shirasawa Factory *3 |
| Shonan Factory *1 | Nango Factory *3 |
| Hadano Factory *2 | Yamatake Mizuho Co., Ltd. |
| Fujisawa Technology Center *1 | Karatsu Factory *3 |
| Kyoto branch *1 | Aomori Manufacturing Co., Ltd. *3 |
| Hadano delivery center *1 | Wakayama Seiki Co., Ltd. *3 |
| Yokohama delivery center *1 | Shirakawa Seiki Co., Ltd. *3 |
| Export distribution center *1 | Azbil Control Instruments (Dalian) Co., Ltd. |
| Taishin Co., Ltd. | Azbil Hong Kong Limited (Shenzhen Factory) |
| Hokkaido Factory *3 | |
| Haramachi Factory *3 | |

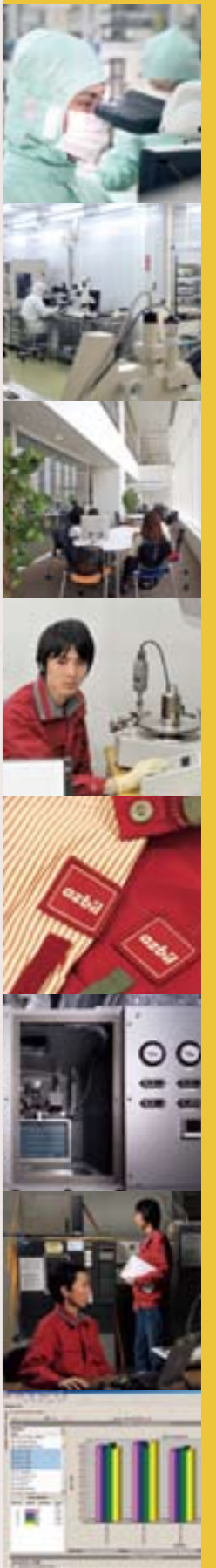
*1 : Yamatake Corporation
 *2 : Yamatake Control Products Co., Ltd.
 *3 : Kimmon Manufacturing Co., Ltd. and subsidiaries

We realize a timely, stable product supply making use of our network of production bases in Japan and overseas. By efficiently operating the various production bases of our Group companies in Japan and abroad, we are able to provide our customers with products that offer the right quality, cost and delivery time. Also, the know-how that comes from handling a wide range of products is reflected throughout our own product lineup.



By refining basic technologies and pioneering advanced technologies, we are building the future of “human-centered automation.”

As a frontier enterprise with over a century of history for its core measurement & control technologies, and engaged in global environment protection, the azbil Group has been active as an industry leader with a clearly defined philosophy. To ensure the continued evolution and enrichment of our own technologies that support the “human-centered automation” that serves as the driving force for our business, we conduct a multifaceted R&D program, ranging from basic to advanced technologies.



In order to be accepted as a trusted member of society, the azbil Group strives to realize safety, comfort and fulfillment in people's lives while contributing to the global environment.

Keenly aware of the Group's role in society, we try to give back to society and to the future.

Whether it relates to the society that surrounds our lives, or the global environment, in the azbil Group we are aware of our role as a corporate citizen. Taking a distinctively "human-centered" approach, azbil is promoting a wide range of CSR activities — the environment, health and welfare, community activities and education for youth. Moreover, aiming to achieve further cuts in the environmental load associated with business activities, azbil is actively engaged in environmental protection activities such as energy saving, resource saving, and pollution-prevention countermeasures for chemical substances. Making new strides with the development, execution and accumulation of know-how, azbil is building the basis of education for youth.

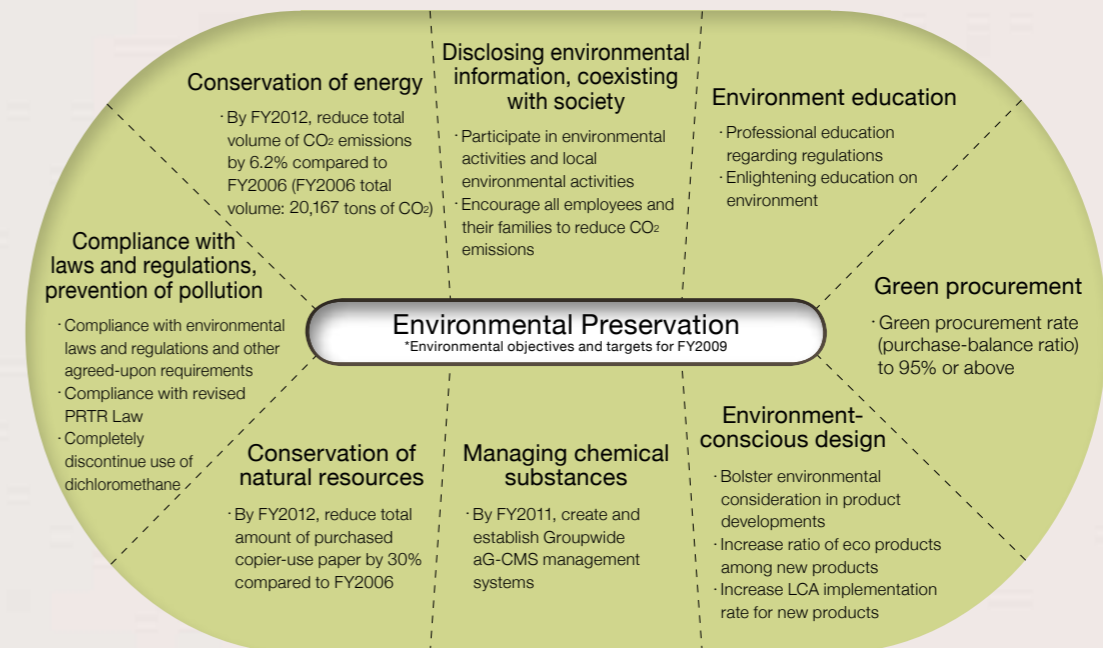
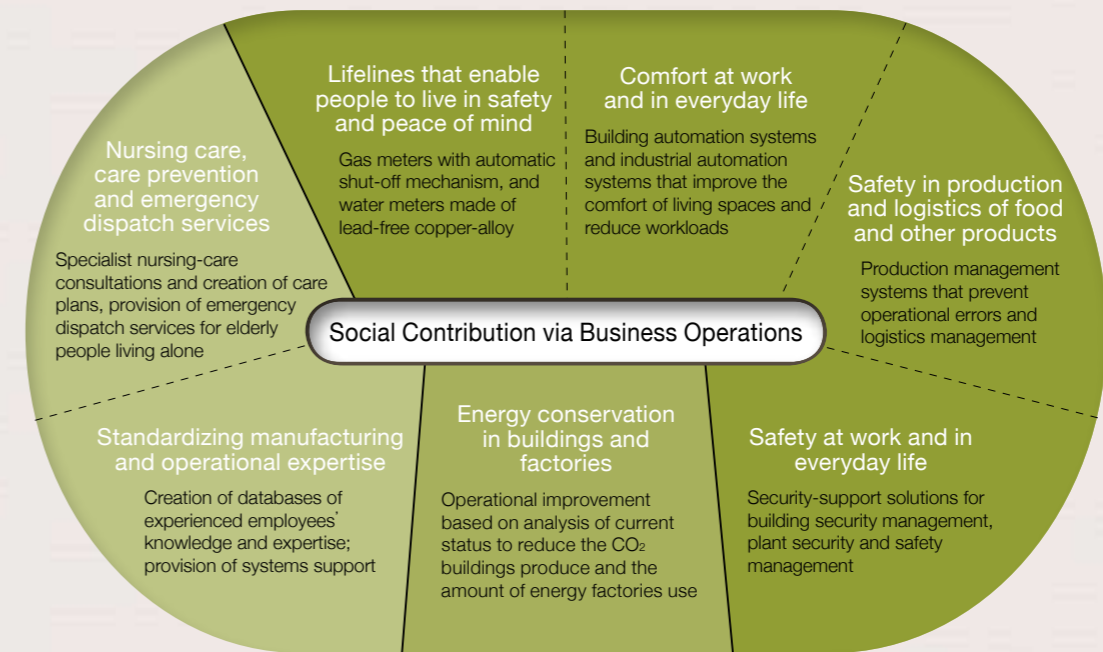


Corporate Social Responsibilities (CSR) of the azbil Group

Areas of Social Contribution

The azbil Group promotes distinctive social contribution activities in each of the following areas.

- **People (educational activities):**
Providing opportunities at public facilities for experiential learning to local residents, providing environmental learning and experiential activities to elementary schools, etc.
- **Lifestyle (activities for health and welfare, and safe lifestyle):**
Emergency dispatch for the elderly, nursing at senior citizen facilities, employment for persons with disabilities, participation in bazaars for welfare facilities, etc.
- **Society (activities for a safe and comfortable community):**
Support for workplace safety, area management and operation of buildings, support for local sports rallies (environmental awareness, garbage collection and separation), cooperation with a voluntary organization in refurbishing used personal computers, support for relief in disaster areas, etc.
- **The Earth (activities contributing to the global environment):**
Energy and resource conservation, environmental impact assessment, cleaning up beaches and mountains, support for environmental promotion events, etc.



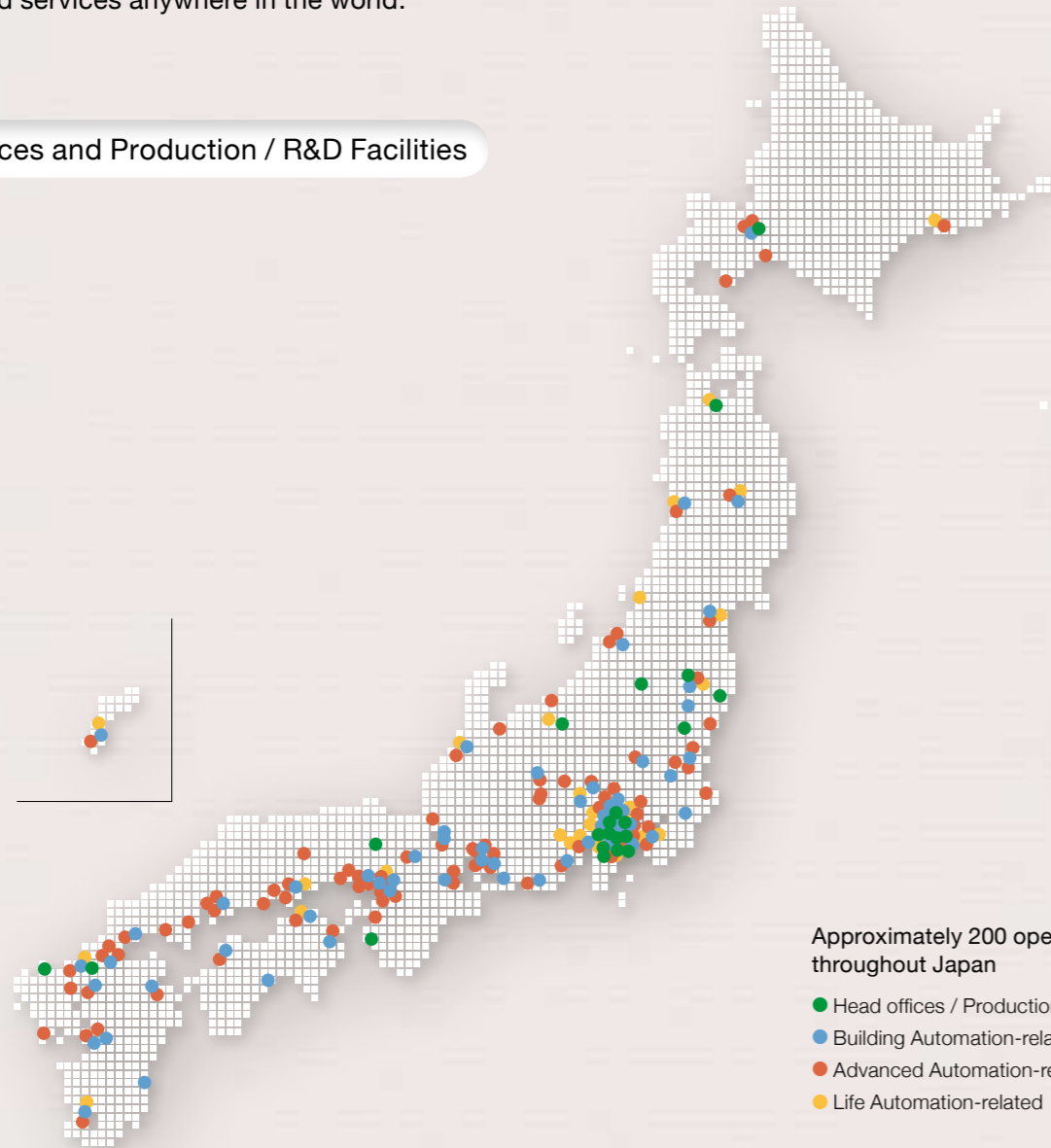
CSR Activities



Unified under the azbil Group brand, this network ensures a fast and reliable response to a broad range of international customer requirements.

azbil products support the valuable assets of our customers and the community, so it is imperative that they always offer "safety, comfort and fulfillment." That is why we have enhanced the quality of product development and solution offerings, while also upgrading our production technologies and distribution logistics, building a global network of factories and service centers that can provide superior quality products and services anywhere in the world.

Head Offices and Production / R&D Facilities



Approximately 200 operating sites throughout Japan

- Head offices / Production facilities
- Building Automation-related
- Advanced Automation-related
- Life Automation-related

Overseas Network

● Asia

- Azbil Korea Co., Ltd.
- Azbil Taiwan Co., Ltd.
- Azbil India Pvt. Ltd.
- Azbil Vietnam Co., Ltd.
- Azbil (Thailand) Co., Ltd.
- Azbil Philippines Corporation
- Azbil Malaysia Sdn. Bhd.
- Azbil Singapore Pte. Ltd.
- PT. Azbil Berca Indonesia
- Azbil Control Instruments (Dalian) Co., Ltd.
- Azbil Information Technology Center (Dalian) Co., Ltd.

- Yamatake Environmental Control Technology (Beijing) Co., Ltd.
- Azbil Control Solutions (Shanghai) Co., Ltd.
- Shanghai Azbil Automation Co., Ltd.
- Azbil Hong Kong Limited
- Yamatake Automation Products Shanghai Co., Ltd.

● U. S. A.

- Azbil North America, Inc.
- BioVigilant Systems, Inc.

● Europe

- Azbil Europe NV

Head offices are indicated by ● on map.

Head Offices and Production / R&D Facilities



Group Network



Group companies in Japan

●Yamatake Corporation

As the core of the azbil Group, rooted firmly in "measurement and control" technologies, Yamatake Corporation pursues "human-centered automation," which aims to contribute to people's safety, comfort and fulfillment and also to the global environment. We are developing the Building Automation business in the building market, the Advanced Automation business in the plant and factory markets, and the Life Automation business in lifelines, health care, and other markets connected closely with everyday life. The Company also actively conducts business in overseas markets, targeting further growth.

●Yamatake & Co., Ltd.

Trading firm dealing in control equipment, and main distributor of control components manufactured by the azbil Group.

●Yamatake Control Products Co., Ltd.

Manufacture and sales of electronic products, mold die-casts, and mechanical components, such as printed wiring boards, microswitches and limit switches.

●Yamatake Expert Services Co., Ltd.

Placement service to promote employment of retirees and mid-career professionals in technology, sales, manufacturing and related fields.

●Yamatake Friendly Co., Ltd.

A special subsidiary employing persons with disabilities for various jobs at azbil Group factories, such as cleaning, mail delivery, making copies, parts packaging for production lines, and equipment maintenance.

●Yamatake Care-Net Co., Ltd.

Assisted care services for the elderly living at home (with support under the revised Nursing Care Insurance Law), including training for caregivers, and sales, rental and maintenance of home medical equipment.

●Safety Service Center Co., Ltd.

Sales of emergency dispatch services, as well as 24-hour health consultation hotline, in-home medical equipment support, and services to prevent lifestyle-related illnesses and the need for nursing care.

●SecurityFriday Co., Ltd.

Development and sales of software to monitor for unauthorized access to a corporate network and to quantify password strength for which in the past there have been only rough, nonscientific indices.

●Hara Engineering Co., Ltd.

Development and manufacture of automated assemblers that are user-friendly, by fusing human engineering with advanced mechatronics, a combination of mechanical engineering and electronic engineering.

●Kimmon Manufacturing Co., Ltd.

Development, manufacture and sales of meters, metering and instrumentation systems for gas and water supplies, and related construction and maintenance.

●Yamatake Mizuho Co., Ltd.

Yamatake's core factory for flow measurement instruments, such as electromagnetic flowmeters and water meters. It also maintains a world-class flowmeter calibration facility.

●Royal Controls Co., Ltd.

Sales of mainly Yamatake's industrial automation systems and products, and related system engineering.

●Taishin Co., Ltd.

Development, design and manufacture of electronic control equipment, mainly for the azbil Group.

●Tem-Tech Lab.

R&D-based company focused on the development, manufacture and sales of front-end semiconductor production equipment, such as high value added pressure sensors.

Group companies worldwide

We conduct business related to engineering, sales, installation, adjustment, maintenance and services of automation systems and equipment for industrial and building applications. We also manufacture and conduct engineering and sales of a wide variety of control instruments, control valves and switches, develop software; and provide data processing and technical services.

- Azbil Korea Co., Ltd.
- Azbil Taiwan Co., Ltd.
- Azbil India Pvt. Ltd.
- Azbil Vietnam Co., Ltd.
- Azbil (Thailand) Co., Ltd.
- Azbil Philippines Corporation
- Azbil Malaysia Sdn. Bhd.
- Azbil Singapore Pte. Ltd.
- PT. Azbil Berca Indonesia
- Azbil Control Instruments (Dalian) Co., Ltd.
- Azbil Information Technology Center (Dalian) Co., Ltd.
- Yamatake Environmental Control Technology (Beijing) Co., Ltd.
- Azbil Control Solutions (Shanghai) Co., Ltd.
- Shanghai Azbil Automation Co., Ltd.
- Azbil Hong Kong Limited
- Yamatake Automation Products Shanghai Co., Ltd.
- Azbil North America, Inc.
- BioVigilant Systems, Inc.
- Azbil Europe NV

